



Installing a GTR129 External Antenna on a Richmond Rolling Solutions Sliding Gate Motor Models: GTR156, GTR212, GTR061 & GTR207



Before purchasing or attempting to install the GTR129 External Antenna, please check that your gate motor is one of the models listed at the top of this page & also has the “Ant”/”Grd” terminal block present on the PC Board.



This product is not compatible with ALL Richmond Rolling Solutions Sliding Gate Motors or Gate Automation Kits.

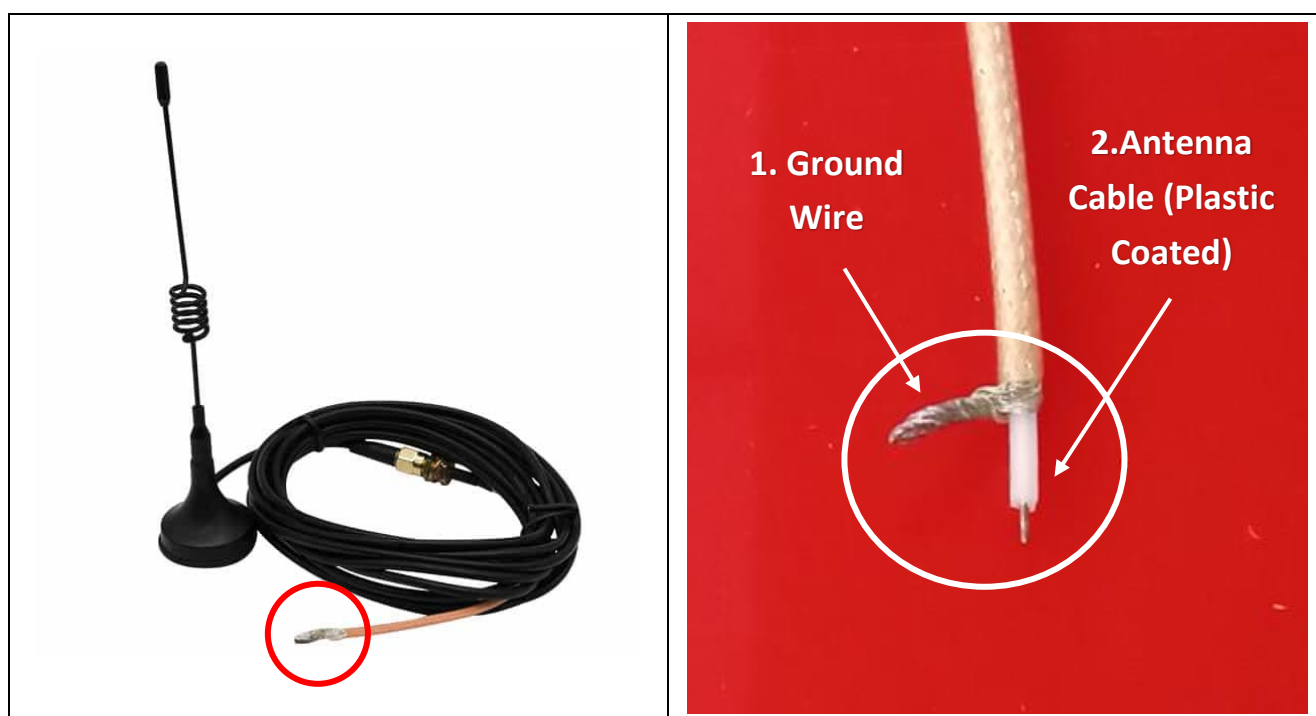


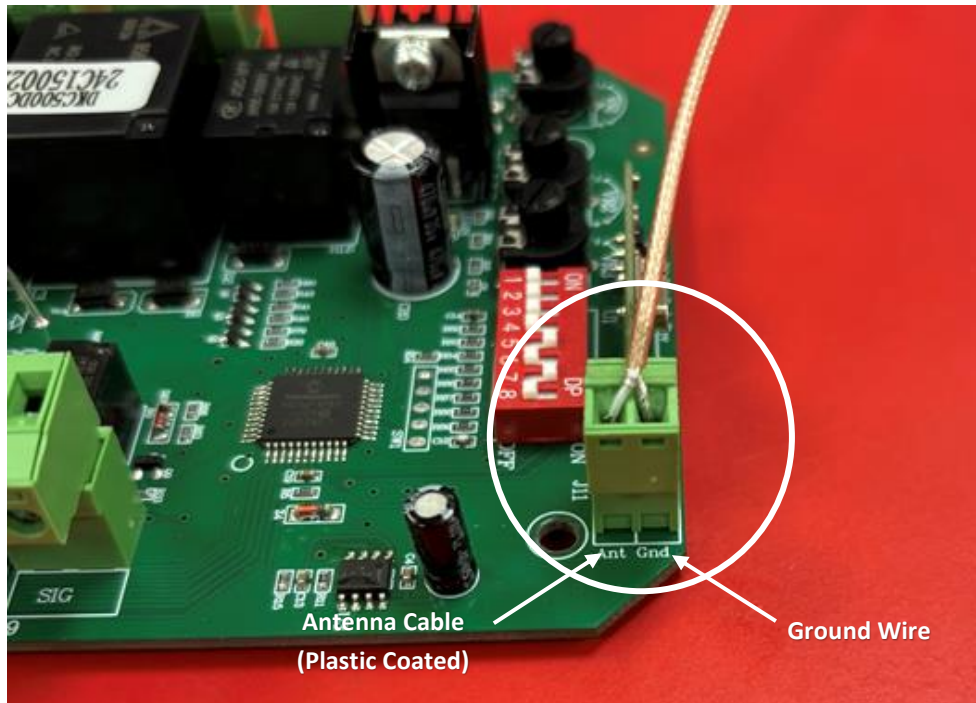
The GTR129 External Antenna is an additional accessory designed to extend or improve the signal range between your sliding gate push button, or wireless keypad, and your sliding gate motor.

****Please be aware that an extension in wireless signal range cannot be guaranteed with the installation of a GTR129 External Antenna, as there are many things that can impact on the signal of any wireless device****

The connection end of the GTR129 External Antenna consists of two parts:

1. A **Ground Wire**
2. An **Antenna Cable**





To install a GTR129 External Antenna, you must locate the Antenna terminals on your relevant Richmond Sliding Gate Motor's PC Board. The two terminals will be labelled "**Ant**" & "**Gnd**".

1. Remove the pre-existing (factory fitted) antenna wire from the "Ant" terminal & pull it through the silicon at the top of the PC Board housing.



Pull the pre-existing antenna out through the silicone covered hole at the top at the top of the PC Board housing. (RED Arrow**)**

Insert the wiring of the GTR129 External Antenna through the same point in the PC Board housing . (WHITE Arrow**)**

2. Insert the antenna cable (plastic coated) of the GTR129 External Antenna into the "Ant" terminal & insert the ground wire into the "Gnd" terminal **(As Per Image Shown Above)**.