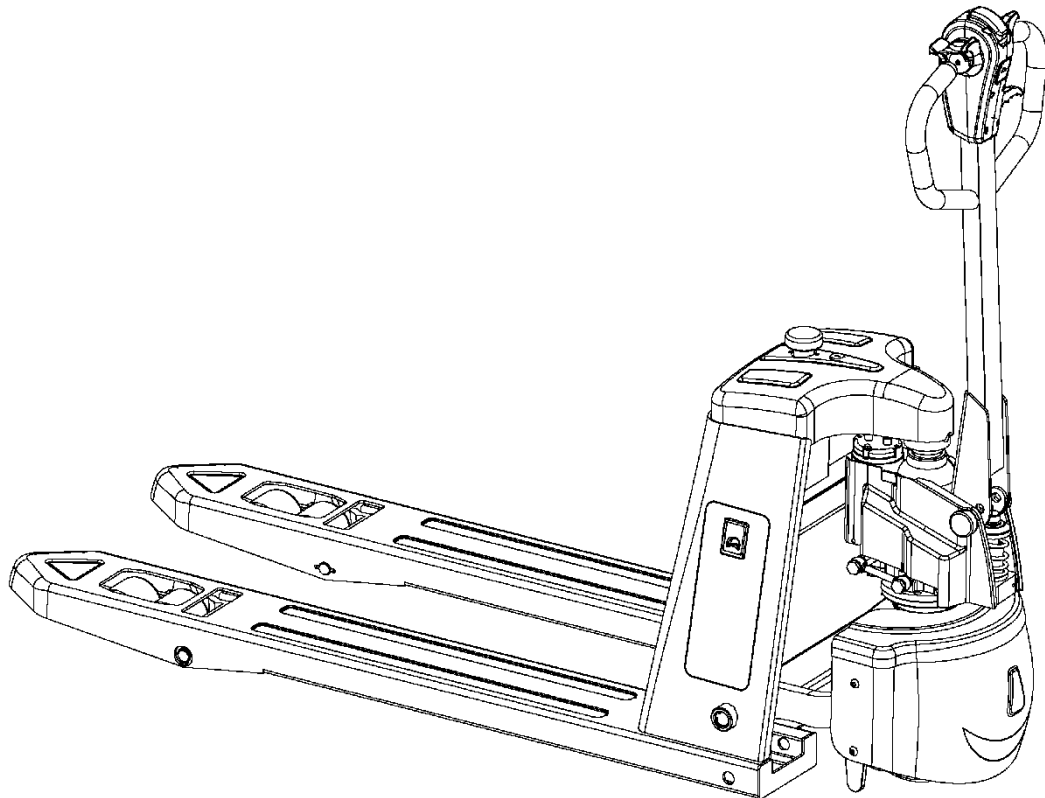
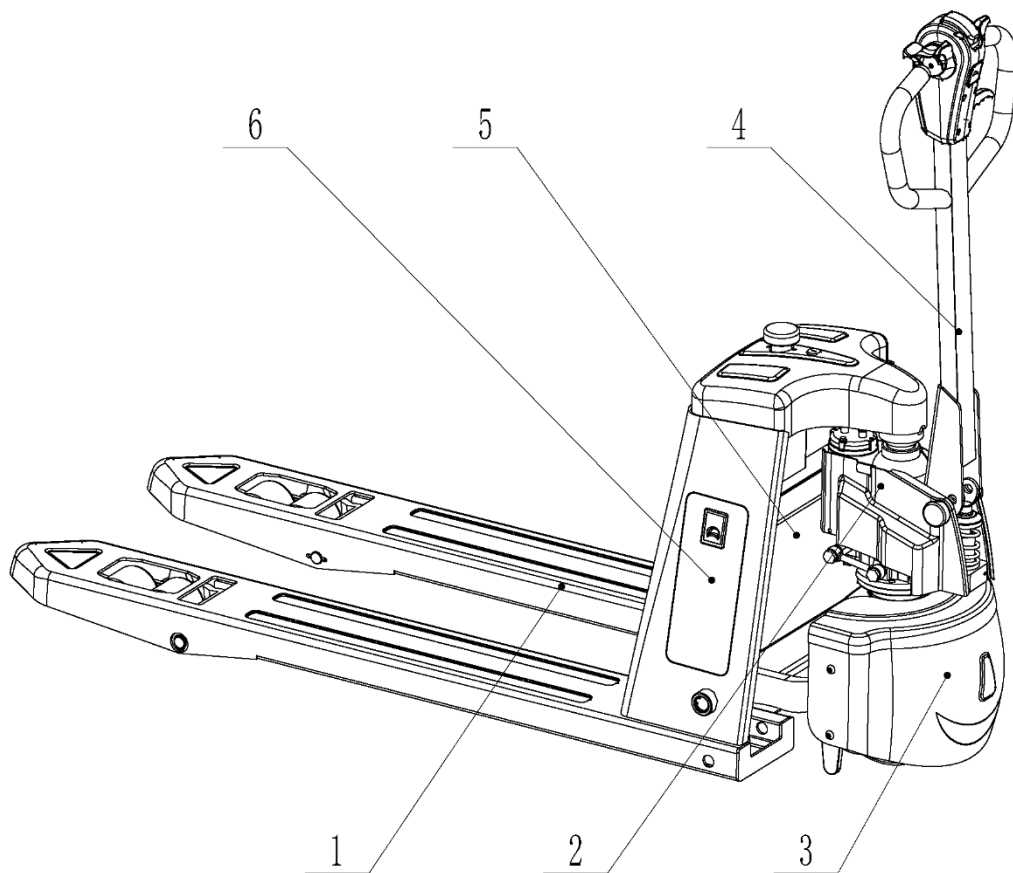




PJR122  
Electric Pallet Truck  
Part List





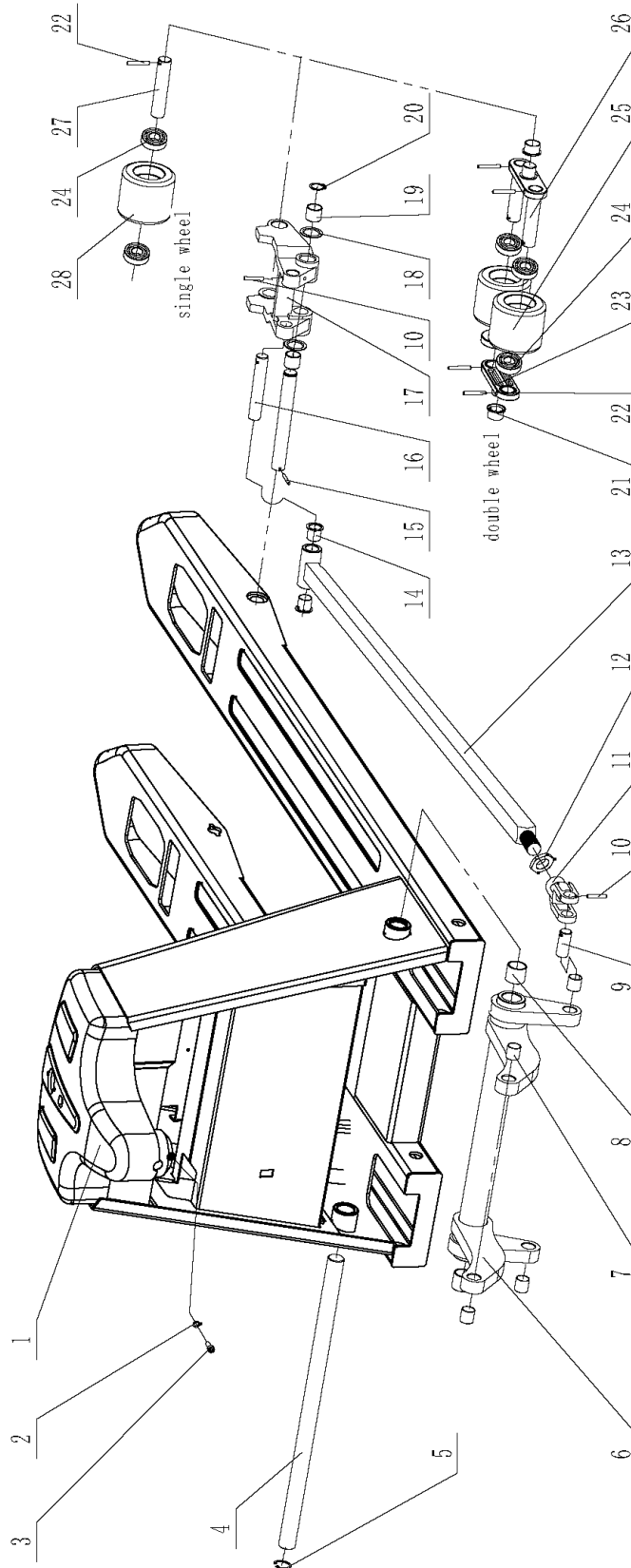
1. FB01 Truck body
2. FB02 Hydraulic System
3. FB03 Driving System
4. FB04 Operation System
5. FB05 Electronic System
6. FB06 Battery compartment cover

PJR122

---

Note: The assembly and structure content expressed in the parts catalog may not fully appear on your model, but you can query the parts information of your selected model in the parts catalog.

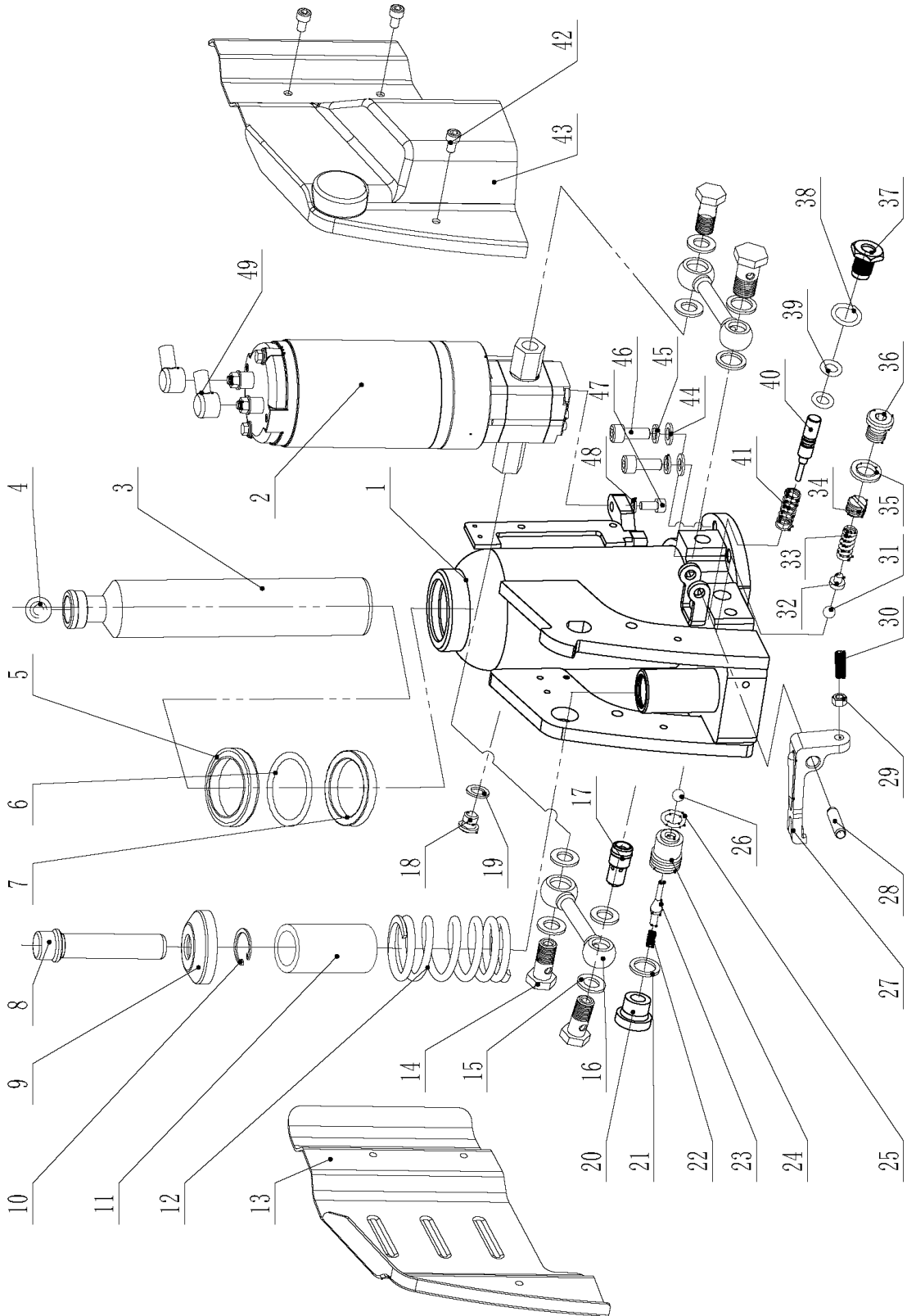
# FB01 Truck Body



## FB01 Truck Body Part List

Index	Part No.	Part Name	Size	No.
1	FB01-1/560	Frame	560#	1
	FB01-1/685		685#	
2	FB01-2	Spring washer	$\phi 6$	1
3	FB01-3	Screw	M6 $\times$ 16	1
4	FB01-4/560	Shaft	560#	1
	FB01-4/685		685#	
5	FB01-5	Snap ring	$\phi 25$	2
6	FB01-6/560	Lifting yoke	560#	1
	FB01-6/685		685#	
7	FB01-7	Bushing	1820	4
8	FB01-8	Bushing	2525	2
9	FB01-9	Shaft		2
10	FB01-10	Spring bin	$\phi 5 \times 30$	4
11	FB01-11	Connector		2
12	FB01-12	Nut	M22 $\times$ 1.5	2
13	FB01-13/560	Rod	560#	2
	FB01-13/562		685#	
14	FB01-14	Bushing	1820	4
15	FB01-15	Spring pin	$\phi 4 \times 30$	2
16	FB01-16	Shaft		2
17	FB01-17/D	Wheel bracket		2
	FB01-17/S			
18	FB01-18	Washer		4
19	FB01-19	Bushing	2020	4
20	FB01-20	Spring pin	$\phi 20$	2
21	FB01-21	Bushing	2015	4
22	FB01-22	Spring pin	$\phi 5 \times 35$	8
23	FB01-23	Splint		4
24	FB01-24	Bearing	6204	8
25	FB01-25	Load wheel	$\phi 80 \times 70$	4
26	FB01-26	Shaft		4
27	FB01-27	Shaft		2
28	FB01-28	Load wheel	$\phi 80 \times 93$	2

# FB02 Hydraulic System

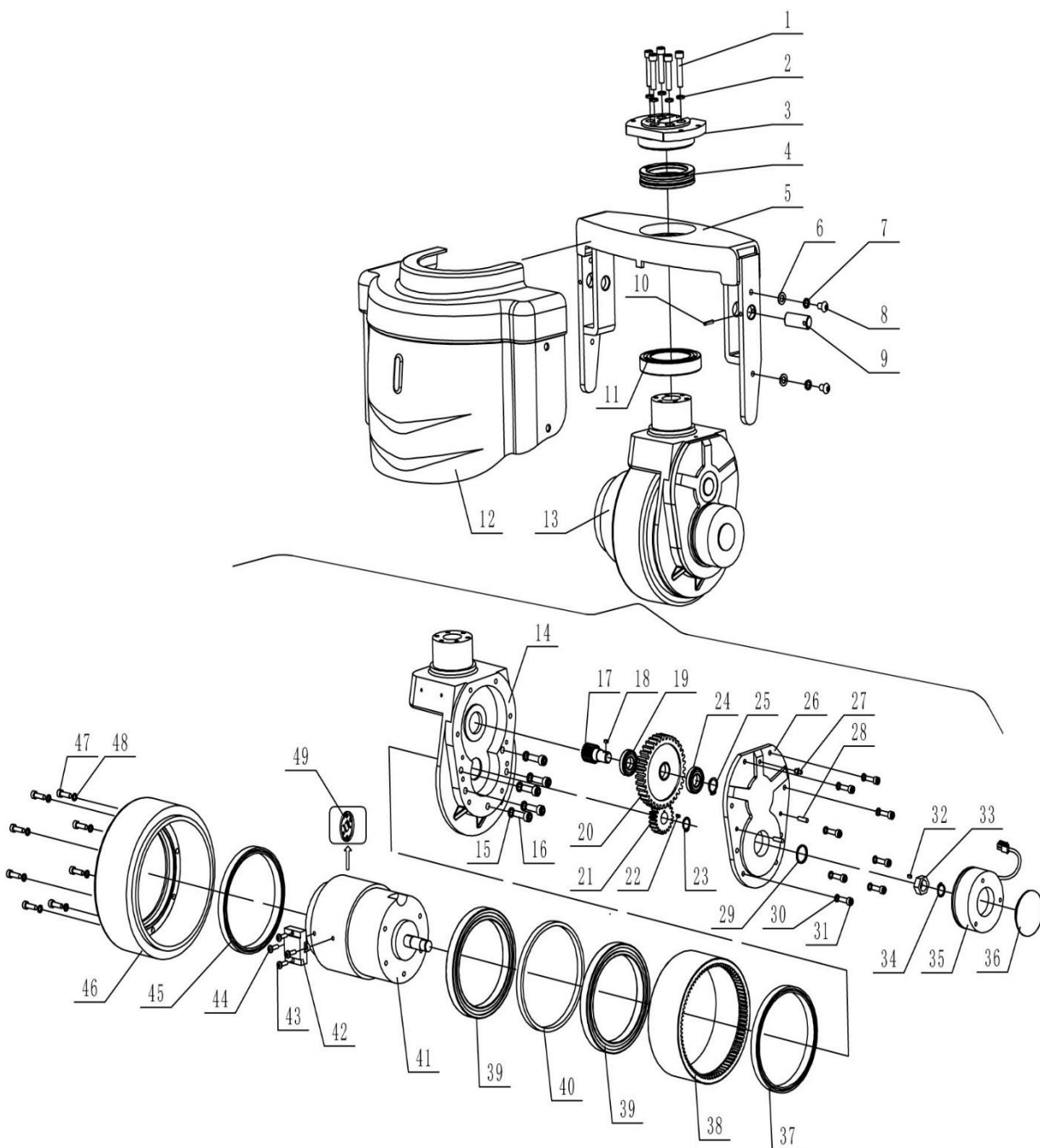


## FB02 Hydraulic System Part List

Index	Part No.	Part Name	Size	No.
1	FB02-1	Pump body		1
2	FB02-0	Pump & Motor assembly		1
3	FB02-3	Ram piston		1
4	FB02-4	Steel ball	19	1
5	FB02-5	Dust seal ring	42	1
6	FB02-6	O-Ring	42	1
7	FB02-7	U-Packing	42	1
8	FB02-8	Plunger piston		1
9	FB02-9	Spring cap		1
10	FB02-10	Snap ring		1
11	FB02-11	Bushing		1
12	FB02-12	Spring		1
13	FB02-13	Left cover		1
14	FB02-14	Swing bolt		4
15	FB02-15	Washer seal	G1/4	8
16	FB02-16	Oil pipe		2
17	FB02-17	Compensator Valve		1
18	FB02-18	Oil plug		1
19	FB02-19	O-Ring	8	1
20	FB02-20	Oil plug		1
21	FB02-21	Washer seal	16	1
22	FB02-22	Spring		1
23	FB02-23	Valve		1
24	FB02-24	Valve base		1
25	FB02-25	O-Ring		1
26	FB02-26	Steel ball		1
27	FB02-27	Cam		1
28	FB02-28	Spring pin	8	1
29	FB02-29	Nut	M8	1
30	FB02-30	Socket head cap screw	M8	1
31	FB02-31	Steel ball		1
32	FB02-32	Spring base		1
33	FB02-33	Spring		1
34	FB02-34	Release screw		1
35	FB02-35	Washer seal	10	1
36	FB02-36	Screw plug		1
37	FB02-37	Copper plug		1
38	FB02-38	O-Ring		1
39	FB02-39	O-Ring		2

40	FB02-40	Relief nozzle		1
41	FB02-41	Relief nozzle spring		1
42	FB02-42	Screw	M6*12	6
43	FB02-43	Right cover		1
44	FB02-44	Washer	8	4
45	FB02-45	Spring washer	8	4
46	FB02-46	Screw	M8	4
47	FB02-47	Screw	M6	2
48	FB02-48	Spring Washer	6	2
49	FB02-49	Rubber sleeves		2

### FB03 Driving System



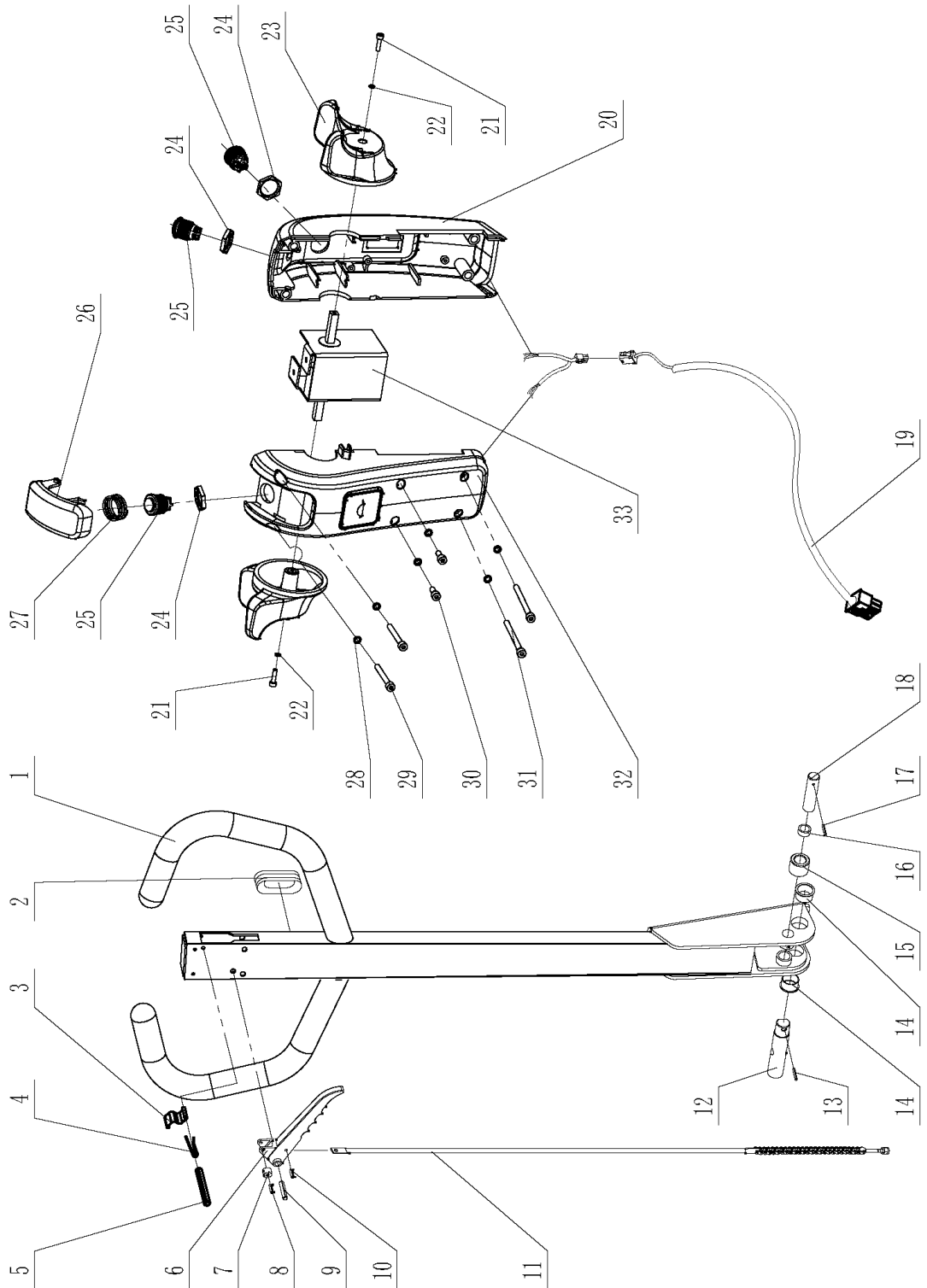
### FB03 Driving System Part List

Index	Part No.	Part Name	Size	No.
1	FB03-1	Screw	M8×40	5
2	FB03-2	Spring Washer	8	5
3	FB03-3	Connecting plate		1
4	FB03-4	Bearing	51113	1
5	FB03-5	Table		1
6	FB03-6	Washer	8	4
7	FB03-7	Lock washer	8	4
8	FB03-8	Screw	M8×12	4
9	FB03-9	Shaft		2
10	FB03-10	Spring pin	5×40	2
11	FB03-11	Bearing	6013	1
12	FB03-12	Protective cover		1
13	FB03-13	Driving assembly		1
14	FB03-14	Gear case		1
15	FB03-15	Spring Washer	8	5
16	FB03-16	Screw	M8×30	5
17	FB03-17	Gear		1
18	FB03-18	Key		1
19	FB03-19	Bearing	16003	1
20	FB03-20	Helical gear		1
21	FB03-21	Helical gear		1
22	FB03-22	Key		1
23	FB03-23	Snap-ring	16	1
24	FB03-24	Bearing	6905	1
25	FB03-25	Snap-ring	15	1
26	FB03-26	Gear cover		1
27	FB03-27	Grease fitting	M8	1



28	FB03-28	Pin	5×15	2
29	FB03-29	Dust seal ring		1
30	FB03-30	Spring Washer	6	8
31	FB03-31	Screw	M6×20	8
32	FB03-32	Key		1
33	FB03-33	Brake nut		1
34	FB03-34	Snap-ring	15	1
35	FB03-35	Brake assembly		1
36	FB03-36	Dust cap		1
37	FB03-37	Dust seal ring		1
38	FB03-38	Gear loop		1
39	FB03-39	Bearing	61824	2
40	FB03-40	Spacer ring		1
41	FB03-41	Motor		1
42	FB03-42	Bracket		1
43	FB03-43	Screw	M4×16	2
44	FB03-44	Screw	M5×12	2
45	FB03-45	Dust seal ring		1
46	FB03-46	Driving wheel		1
47	FB03-47	Screw	M6×20	8
48	FB03-48	Spring Washer	6	8
49	FB03-49	Holder brush assembly		1

# FB04 Operation System

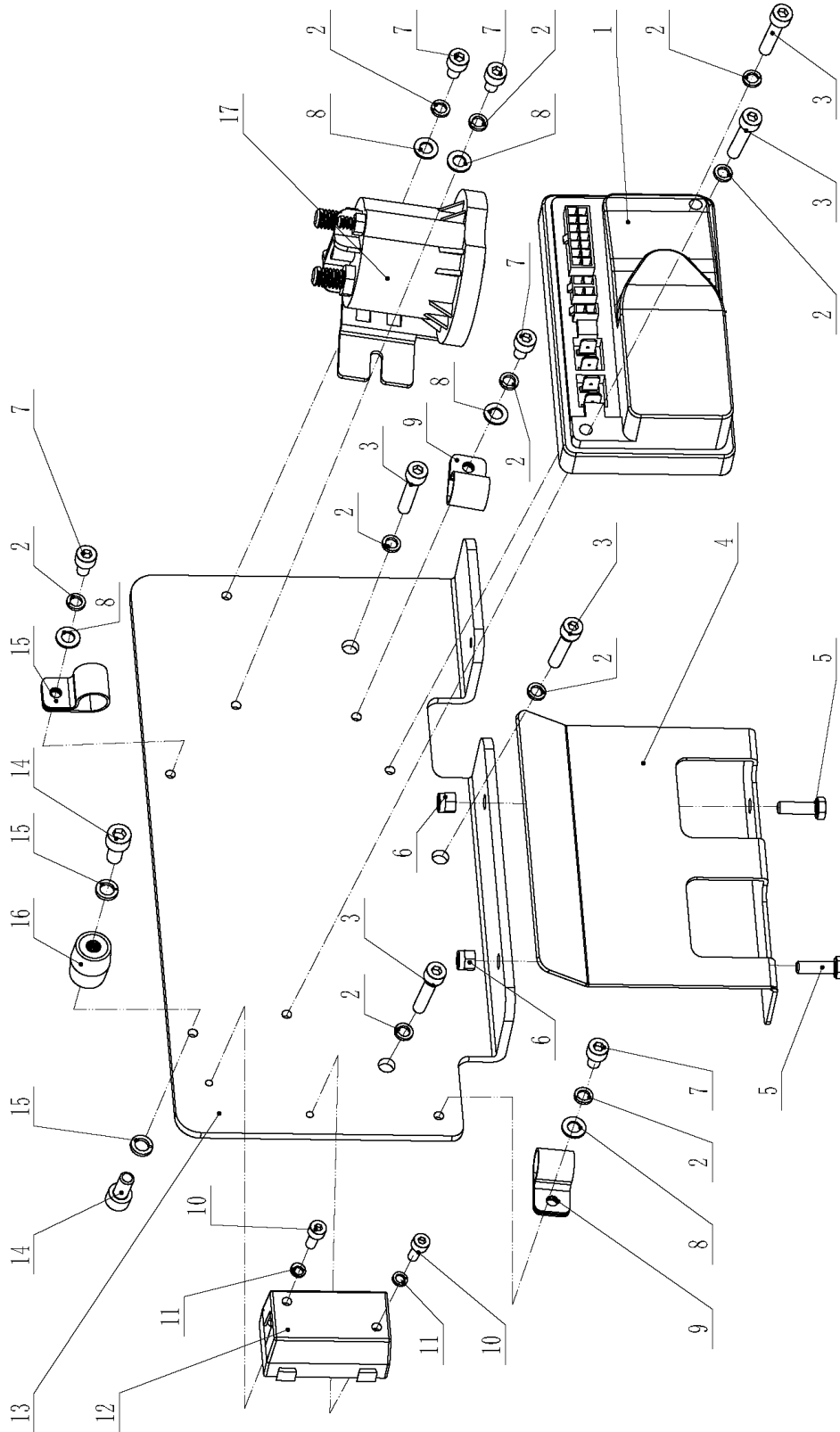


## FB04 Operation System Part List

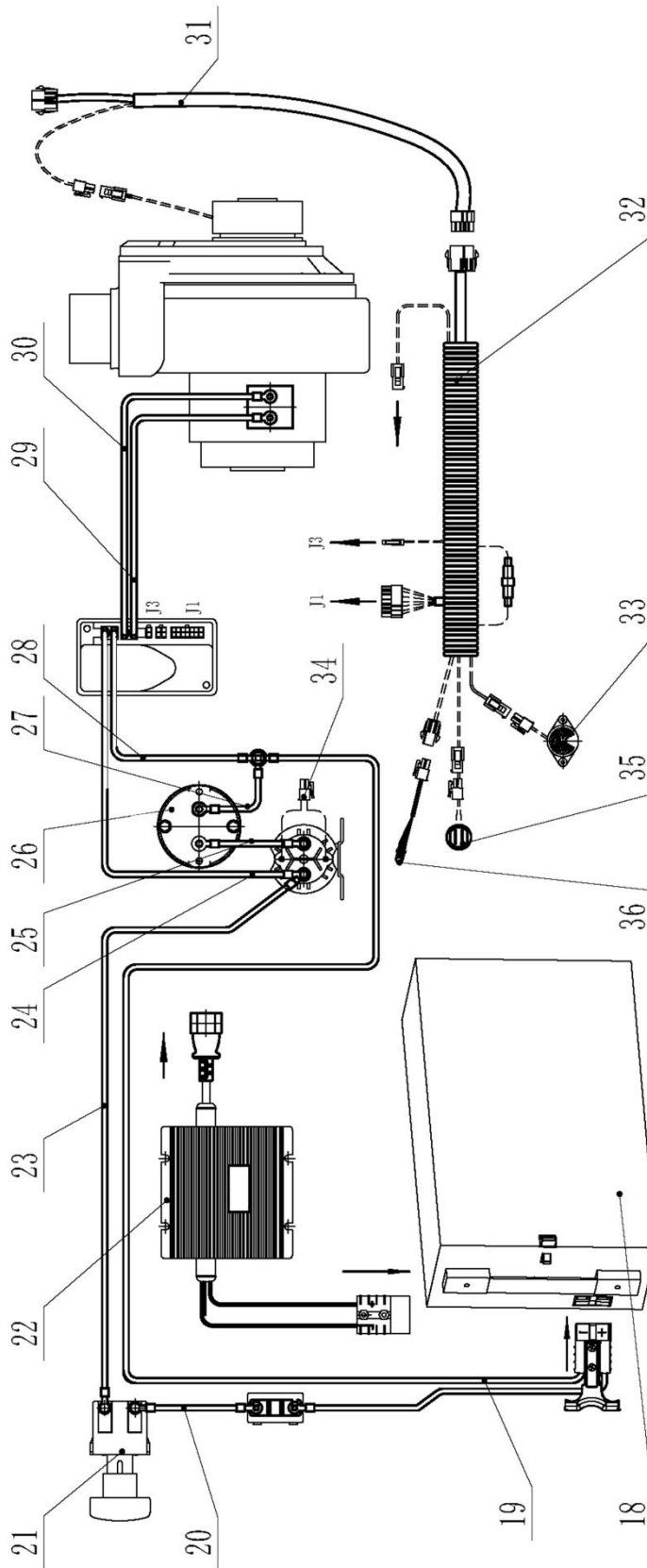
Index	Part No.	Part Name	Size	No.
1	FB04-001	Control handle		1
2	FB04-002	Leaf spring		1
3	FB04-003	Rubber sleeves		1
4	FB04-004	Torsional spring		1
5	FB04-005	Spring pin	4×30	1
6	FB04-006	Roller		1
7	FB04-007	Spring pin	4×16	1
8	FB04-008	Spring pin	4×30	1
9	FB04-009	Spring pin	4×12	1
10	FB04-010	Knob		1
11	FB04-011	Rod		1
12	FB04-012	Spring pin	4×25	1
13	FB04-013	Shaft		1
14	FB04-014	Bushing	2015	2
15	FB04-015	Spring pin	3×20	1
16	FB04-016	Roller		1
17	FB04-017	Bushing	1515	1
18	FB04-018	Shaft		1
19	FB04-019	Handle wire harness		1
20	FB04-020	Cap		1
21	FB04-021	Screw	M3×12	2
22	FB04-022	Spring washer	3	2
23	FB04-023	Accelerator Button		2
24	FB04-024	Nut	M16*1	3
25	FB04-025	Button		3
26	FB04-26	Button reverser cover		3
27	FB04-27	Spring Washer		1
28	FB04-28	Lock washer	4	6
29	FB04-29	Screw	M4×10	2
30	FB04-30	Screw	M4×35	2
31	FB04-31	Screw	M4×50	2
32	FB04-32	Cover		1
33	FB04-33	accelerator		1

# FB05 Electronic System

## Controller Pad



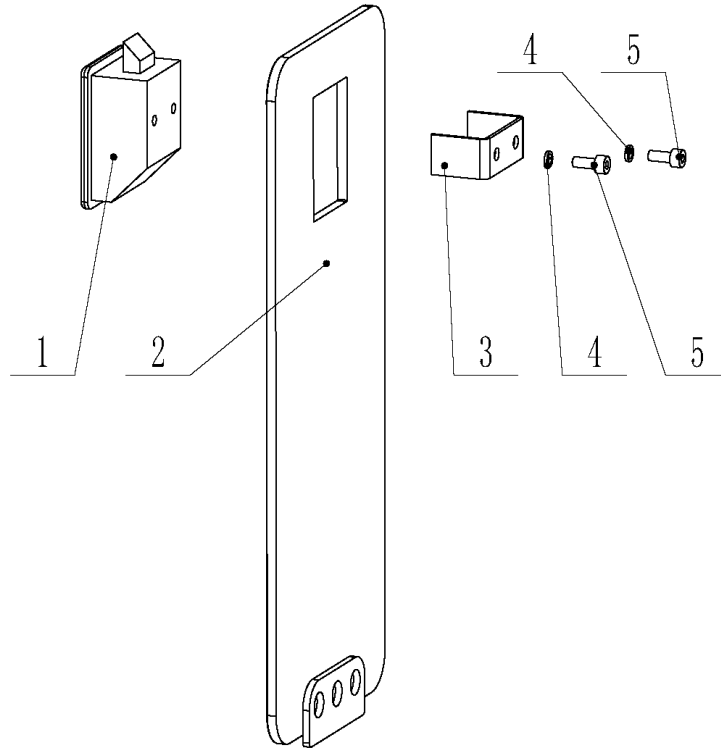
# Harness Connection



## FB05 Electronic System Part List

Index	Part No.	Part Name	Size	No.
1	FB05-1	Controller		1
2	FB05-2	Spring washer	Φ 5	10
3	FB05-3	Screw	M5*25	5
4	FB05-4	<b>Baffle.</b>		1
5	FB05-5	Bolt	M5*16	2
6	FB05-6	Nut	M5	2
7	FB05-7	Screw	M5*12	5
8	FB05-8	Washer	Φ 5	5
9	FB05-9	Clamp	R16	3
10	FB05-10	Screw	M4*12	2
11	FB05-11	Spring washer	Φ 4	2
12	FB05-12	Insurance assembly	100A	1
13	FB05-13	Floor		1
14	FB05-14	Screw	M6*12	2
15	FB05-15	Spring washer	Φ 6	2
16	FB05-16	Insulated joint		1
17	FB05-17	Relay		1
18	FB05-18	Battery		1
19	FB05-19	Power supply cable	Battery "+" pole-safety near end	1
20	FB05-20	FB safety device out	Safety remote end-emergency stop	1
21	FB05-21	E-STOP button	125A	1
22	FB05-22	Charger	External	1
23	FB05-23	E-STOP button out wire	Emergency stop button near end -	1
24	FB05-24	Controller B+ wire	Relay near-controller B+	1
25	FB05-25	Pump motor B+ wire	Relay remote end-lifting motor B+	1
26	FB05-26	Pump motor	Lifting motor B "+", "B-"	1
27	FB05-27	Pump motor B- wire	Insulator-Lifting Motor B-	1
28	FB05-28	Controller B- wire	Insulator-Controller B-	1
29	FB05-29	Driver motor M1 wire	Controller M1-Drive motor M1	1
30	FB05-30	Driver motor M2 wire	Controller M2-Drive motor M1	1
31	FB05-31	Signal extension cable	Main wiring harness-handle wire, brake	1
32	FB05-32	Controller wire harness	Controller-each interactive unit	1
33	FB05-33	Horn wire harness	-Main wiring harness	1
34	FB05-34	Relay control cable	-Main wiring harness	1
35	FB05-35	Power supply lock cable	-Main wiring harness	1
36	FB05-36	failure light cable	-Main wiring harness	1

## FB06 Battery compartment cover



Index	Part No.	Part Name	Size	No.
1	FB06-1	Lock		1
2	FB06-2	Cover plate		1
3	FB06-3	Holder		1
4	FB06-4	Spring washer	Φ5	2
5	FB06-5	Screw	M4*16	2